

# MIMIC Web Simulator

MIMIC Web Simulator creates a virtual lab with hundreds of simulated web servers. It allows you to easily develop and test your web clients, management and monitoring products. Having a virtual and scalable environment, you can try variety of scenarios to test your applications to assure your customers that your web services will work properly when deployed across heterogeneous environments. Best of all, you can reduce your lab budget significantly.

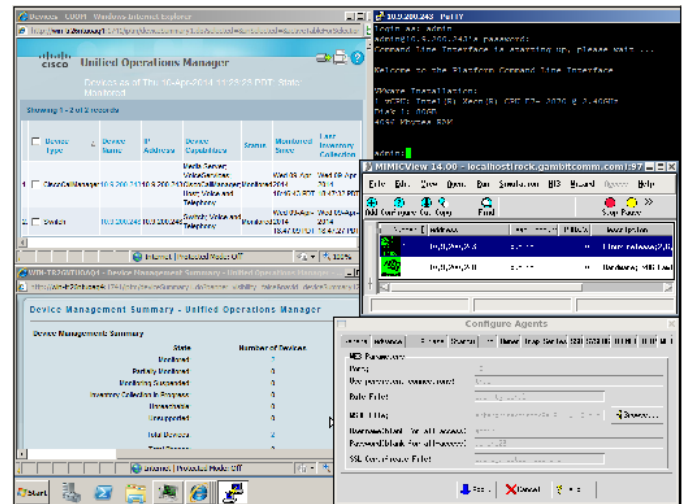
## Web Simulation

- **Unified Communications environments.**
- **Virtual Machines (VMWare, Oracle VirtualBox, RHEV, etc).**
- **Network Infrastructure.**
- **Protocols** - SOAP, REST, XML and WSDL along with HTTP, HTTPS and HTTP Redirect.
- **Customize the simulation** - Start using without any customization or fully customize any/all transactions.

MIMIC Simulator integrates Web and SNMP based monitoring and configurations. It allows developers to perform real world, integrated testing in a virtual and scalable network environment. You can assure your customers that your applications will work properly when deployed across heterogeneous environments.

## Applications

- **Development and Testing** - Web application developers can implement their products quickly and test reliably.
- **Evaluation** - Enterprises can evaluate the suitability of applications with anticipated failure and growth scenarios, or qualify purchases before deployment.
- **Trade Shows**- Marketing can setup powerful "live" demonstrations at trade shows.
- **Sales Demos**- Sales can tailor presentations to the individual customer's environment.
- **Training Environments**- Realistic training scenarios can explore all possible cases. Training environment can be portable rather than based on the classroom.



MIMIC with Cisco Prime Collaboration

## Components

1. **Simulator:** Simulate thousands of servers. Each one can be started or stopped individually or in a group and has its own IP address and configurations. Once started, it starts responding to the web queries your application from anywhere in the network.
2. **Web Wizard:** Enables you to record every aspect of a web server. It captures a session between the web client and server. It then converts the recording in to a simulation.
3. **WSDL Compiler:** Compiles WSDL files to include with the simulations.
4. **SNMP Simulator:** Combine the web simulation with SNMP Simulation to get a complete server behavior simulation. You can manager the server using SNMP along with the Web services.
5. **MIMICShell:** **Simulator** functionality can be controlled by the MIMIC Command line interface.

## Supported platforms

Linux

