



MIMIC SNMP Simulator helps FedTech To Provide Network Management Solutions to Federal Customers

“MIMIC Simulator provides the network environment that is utilized by FTS to engineer holistic solutions that exceed customer standards and expectations while remaining under budget and on time “

**Jason Pulfer
VP Service Delivery
FedTech Services, Inc.**

FedTechServices, LLC (FTS) is recognized for deploying “best of breed” network architecture solutions for the U.S. Central Command (USCENTCOM). FTS provides a mission-critical suite of tools that deliver effective high level network management while enhancing the security of operational networks. FTS solutions are designed to provide real-time visibility, analytics, decision support and management tools that meet the needs of the Global Information Grid (GIG). FTS selected MIMIC SNMP Simulator to create various test scenarios, verify the solution’s functionality and deploy the solution.

FTS uses several network management solutions (NMS), like IBM Tivoli Netcool/OMNIBus, IBM Tivoli Network Manager, HP OpenView and many other vendor applications. These applications are integrated with other tools to create required solutions for FTS’ customers. They are tested against many networking devices. It was complicated for the engineers to setup a test lab and multiple test scenarios for every solution, especially since many of those needed to be repeated for every update and run as regression tests. They searched for different tools to help reduce their test time. They decided on a cost effective solution, MIMIC Simulator for accurately testing the customer solutions.

MIMIC creates a virtual network of many devices, specifically expensive Cisco routers and switches. These networks are discovered by NMS applications to produce topology maps. The simulator helped FTS’ engineers to run functionality tests for the customized rules they developed.

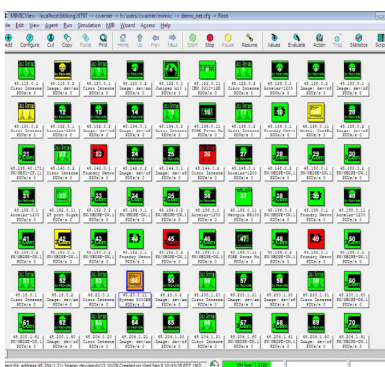
MIMIC is used to generate various standard and private SNMP Traps and Cisco SYSLOG messages. The engineers can verify that the applications received the events and follow the rules to take the appropriate actions to find the root cause. MIMIC made it much easier to verify complex rules, which is hard to do with a physical hardware lab. Also, all simulation files are saved so they can be used for future updates and regression tests. MIMIC’s Discovery wizard helps them to record many physical devices and simulate them as needed for the solution.

MIMIC provided an accurate tool to test various customer solutions and rules. FTS engineers could comprehensively test NMS applications.

MIMIC helps FTS meet the customer needs quickly while ensuring high product quality and reducing capital expenditures.

MIMIC Simulator

- Eliminates hardware needs – Cost savings of 10-100 fold
- Creates multi-vendor virtual lab with 50,000 devices
- Simulates Protocols - SNMPv3, IPMI, NetFlow, Cisco/IOS, Juniper/JUNOS, TL1, TFTP, DHCP, ToD, Telnet, SSH
- Simulates Servers - Web/HTTP, Mail/SMTP, WMI, WBEM, NetConf, DNS
- Runs on IPv4 & IPv6
- Network Recording – Duplicates the production network in to test labs



MIMIC Simulating a large multi-vendor network

MIMIC Simulator Applications:

- **Testing**
Enables Complete Testing
- **Development**
Provides Personal Development Lab
- **Training**
Creates Portable Training Environment
- **Demo**
Carry Demo Lab on your Laptop
- **Evaluation & Deployment**
Enterprises can Evaluate Before Purchase & Configure Before Deployment of Management Apps
- **Support**
Record Customer Environment and Support from your location

FedTech Services, LLC

Hands-on expertise and profound working knowledge of the product puts FTS consultants in a unique position. They provide successive deployments in less time and at less cost than competitors. Engineering sophisticated solutions that meet exacting standards are common at FTS. Rapid solution development, engineering and validation require flexible and dynamic tools that lend real world simulations are critical.

Customer education on solution usage is a critical component of any successful deployment. FTS utilizes training materials that are underpinned by Gambit Communications to produce a realistic environment. The Total Cost of Ownership is driven down by paving the way for rapid solution adoption.

Providing quality service in a timely manner has boosted the corporate image of FTS as a world class software consulting firm.

Gambit Communications

Gambit Communications is a leader in network and SNMP simulation tools that enhance the productivity of management software developers and enterprise users while lowering their costs. MIMIC Simulator is a modular family of simulators used by leading networking vendors for use in applications from development and testing to operator training and disaster simulations. Gambit Communications' portfolio of many customers worldwide includes: FTS, IBM, JP Morgan, VISA, Shell, US Army, US Air Force, CA, HP, Cisco, Intel, AT&T, MCI, Alcatel-Lucent, Nortel.

Ready for

IBM | **Tivoli**.

software

For more information:

Please contact Gambit Communications: info@gambitcomm.com

www.gambitcomm.com

© 2011 Gambit Communications